

SORL Auto Parts, Inc.

(Nasdaq: SORL)

November 2011



This presentation contains "forward-looking statements" within the meaning of the "safe-harbor" provisions of the Private Securities Litigation Reform Act of 1995. Such statements involve known and unknown risks, uncertainties and other factors that could cause the actual results of the Company to differ materially from the results expressed or implied by such statements, including changes from anticipated levels of sales, future national or regional economic and competitive conditions, changes in relationships with customers, access to capital, difficulties in developing and marketing new products, marketing existing products, customer acceptance of existing and new products, and other factors. Accordingly, although the Company believes that the expectations reflected in such forward-looking statements are reasonable, there can be no assurance that such expectations will prove to be correct. The Company has no obligation to update the forward-looking information contained in this presentation.

SORL is a Global Brake and Control System Tier One Supplier to the Commercial Vehicle Industry

Vision

The best value brand in the world

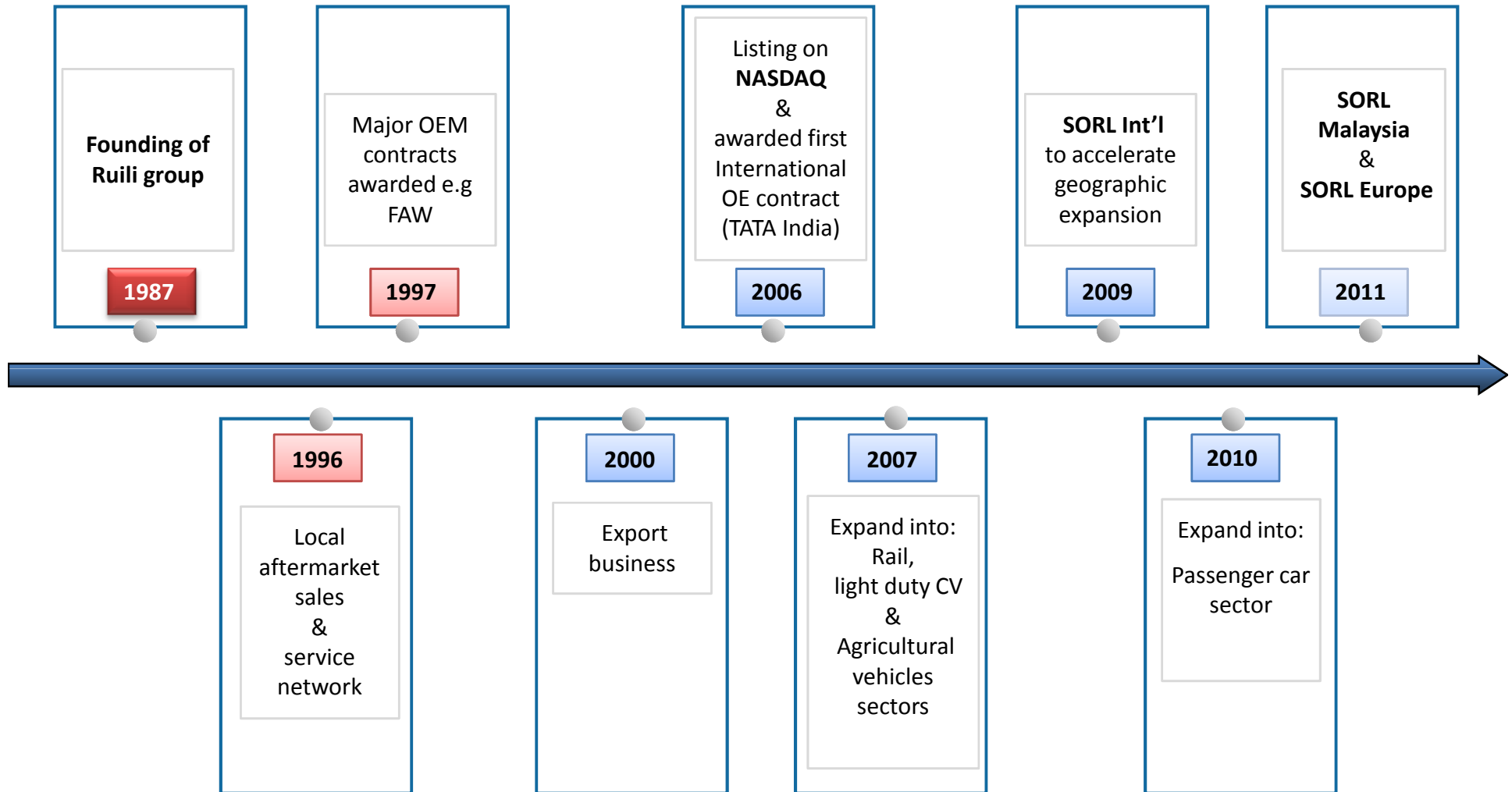
Mission

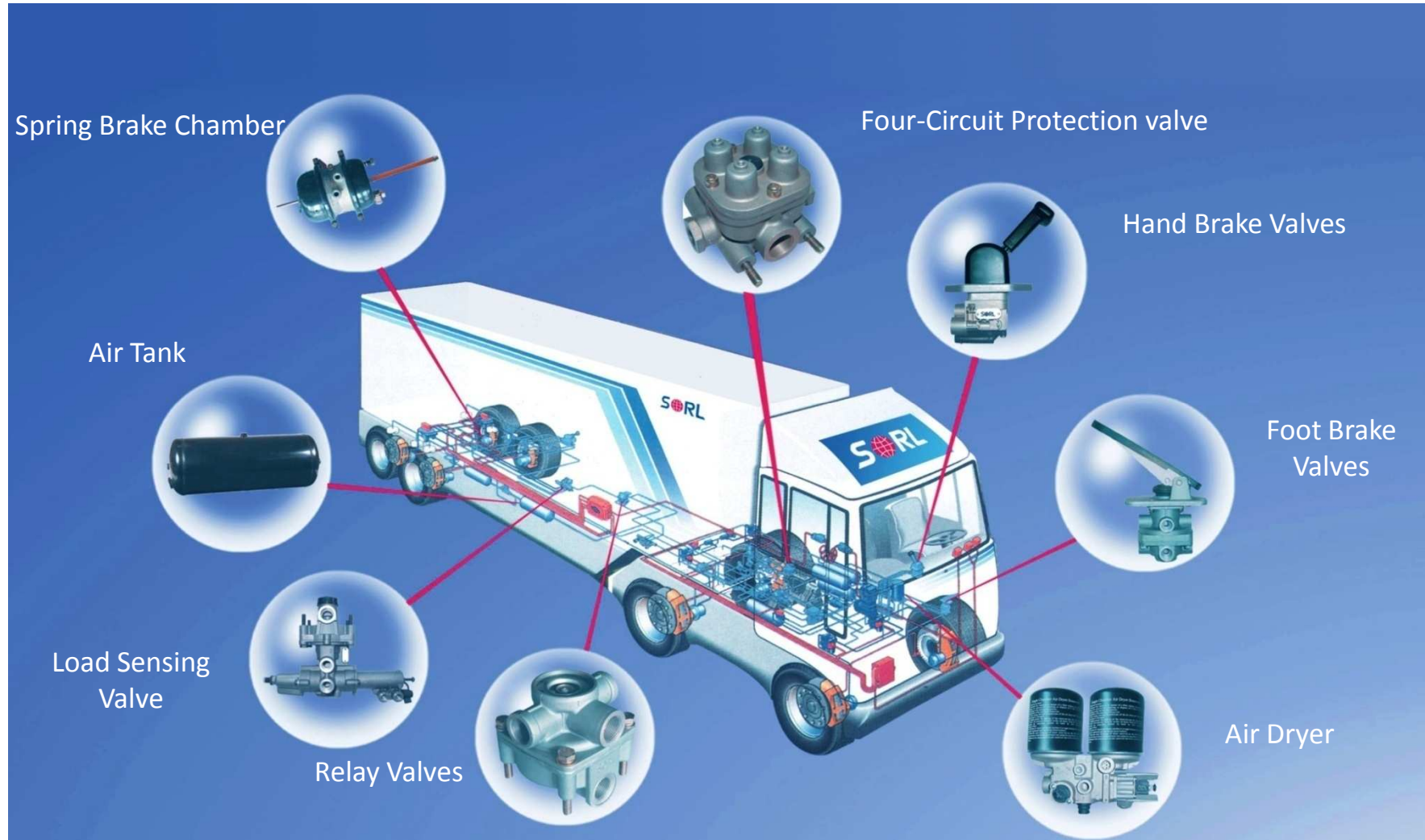
- Increase safety on the road
- Share the value with the customers
- Protect the environment through sustainable development
- Create Value for the Shareholder

Strategic highlights

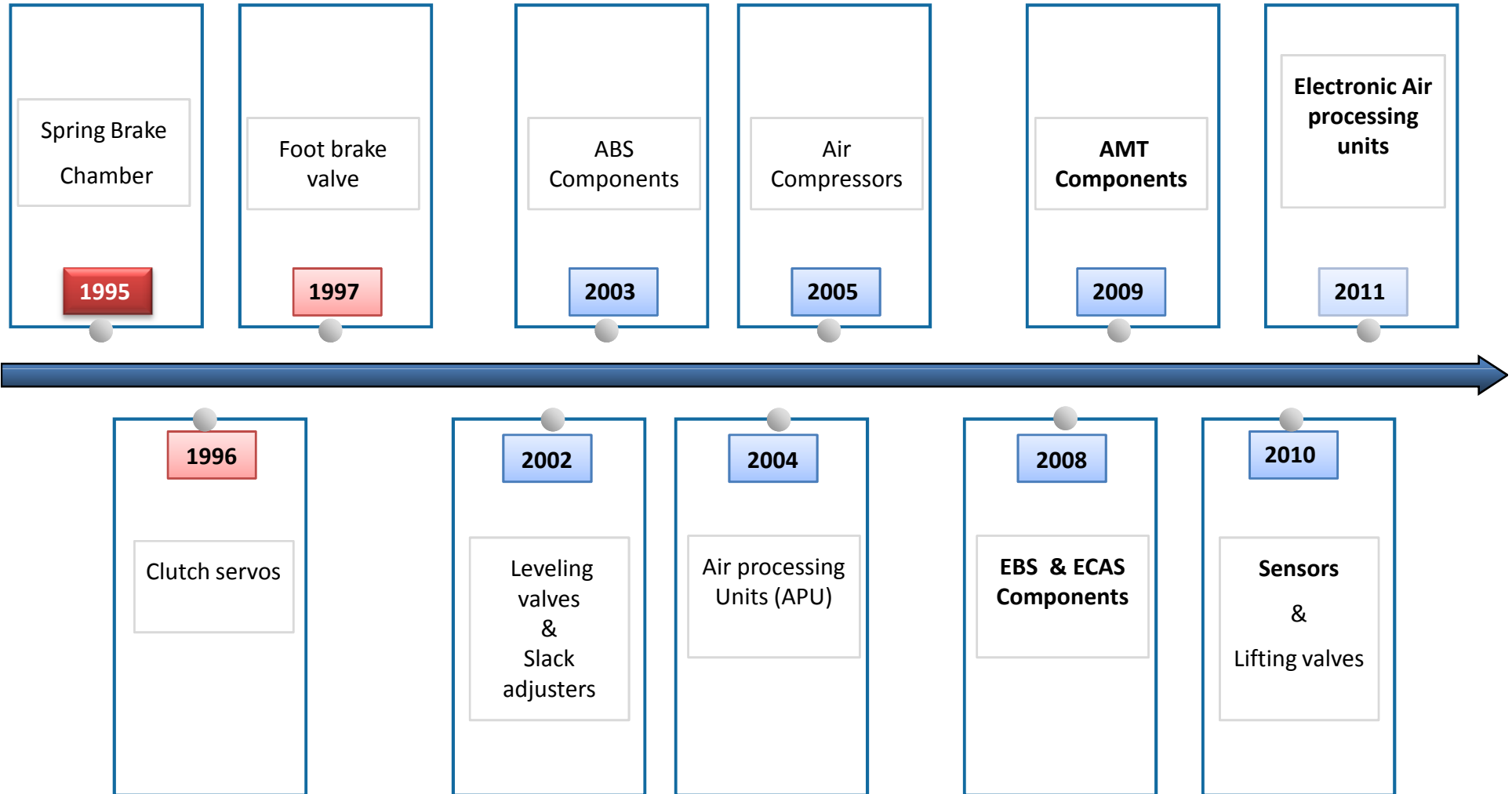
- Expand Globally
- Focus on Innovation for increased safety and fuel saving
- Insure productivity, cost control and stable quality
 - Deploy Six Sigma
 - Invest in the right machines and robots
- Deploy the right organization

Company Milestones





Products Milestones



Highlights

Safety – Comfort – Energy saving - Green

- **Range of electronic systems to fulfill OEM requirements**
 - Conventional brake system products
 - Electronic brake components
 - Railway Braking products
- **Product innovation to increase safety and fuel saving**
 - New energy automotive brake products
 - EBS System
 - Suspension System (ECAS)
 - Clutch transmission system (AMT)
- **Environment friendly manufacturing process**
 - 5S (SEIRI,SEITON,SEISO,SETKETSU,SHITSUKE)
 - ISO14001 Environmental management System
 - REACH Compliance

Dedicated R&D Center

- Technical staff of 193 people, including 75 engineers or senior engineers

Collaboration with Leading Universities

- Cooperate with leading universities in China



Tsinghua University



Tongji University



Zhejiang University



Harbin Institute of Technology

R&D Projects Outsourced by OEM Customers

- 11 R&D projects outsourced by large-scale OEM customers in 2010

Currently own 64 patents with 29 patents pending

R&D investment approx. 3.5% to 4% of sales

Europe office 'attracting talent'....

69 OEM customers in China

(all major truck and bus manufacturers)

26 Awards from China OEM Customers since 2008

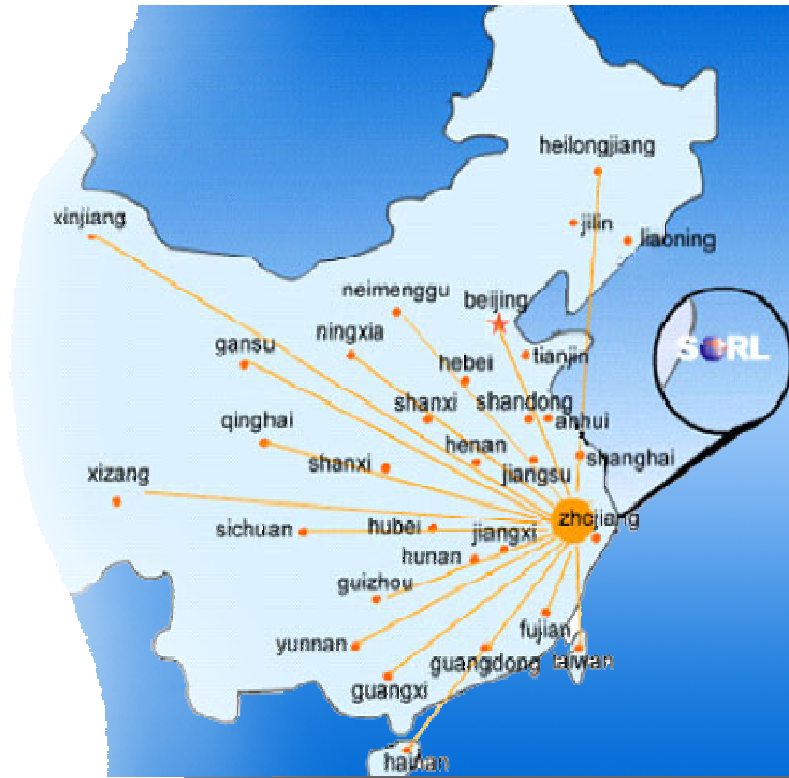
- 2011, "Tier one Supplier" of Dongfeng Dana Axle;
- 2010, "Core Supplier" of FAW Group;
- 2009, "Excellent Supplier" of Foton;
- 2008, "Annual Qualified Supplier" of CNHTC;



Ranking	CV maker	CV SOM in 2010 ⁽¹⁾	SORL's avg. SOM with Each VM ⁽²⁾
1	Beiqi Foton	15.62%	75%
2	Dongfeng	15.04%	50%
3	FAW	9.11%	45%

(1) Source: China Association of Automobile Manufacturers (CAAM)); market share data is defined as % of total units of commercial vehicles sold in China

(2) Source: Company's statistics



- Aftermarket - the birthplace of SORL!
- 28 national distributors representing exclusively SORL branded products; Servicing 1200 sub-distributors.
- SORL's strong aftermarket position has supported SORL's OE position
- SORL's service level provided by sales network & teams has set the standards in the market – **'China TOP brand 2006-2011'**

	SORL	International Competitors	Chinese Competitors
Relationship with Big Local OEMs	●	◐	◐
Nationwide Sales Network	●	◐	◐
Cost Competitiveness	●	◐	◑
Brand Recognition	◑	◑	◐
R&D Capability	◑	◑	◐
Delivery and Aftermarket Services	●	◐	◐

Advantages over International Competitors in China

- Nationwide sales network and close relationship with big OEMs
- Lower cost structure with competitive product performance
- China-based R&D efforts, closer to end market
- Timely delivery and superior customer service

Advantages over Chinese Competitors

- Nationwide sales network and close relationship with big OEMs
- Higher product quality with competitive cost structure
- Well-known brands with 10+ years experience
- Strong R&D capabilities
- Timely delivery and superior customer service

Regional 'Hubs' being deployed



- Europe - Belgium (est. Q3 2011)
- South East Asia - Malaysia (est. Q2 2011)
- India (2010)
- USA – Chicago (2009)
- Hong Kong – est. Q4 2009
- USA - Los Angeles (est. 2005)
- Middle East - Dubai (est. 2001)

Hub: Local legal entity responsible for building Aftermarket network and & Original Equipment contracts
Revenue outside China in 2010 approx. 49M USD (+41.4% vs PY).



Highly Efficient Manufacturing Process

- Reorganize production lines straight-line to U-shape track
- Increased automation of manufacturing process
- Shortened cycle time to enable quick adjustments to production

Increased output per person by **40%** over the last 4 years – based on revenue per employee



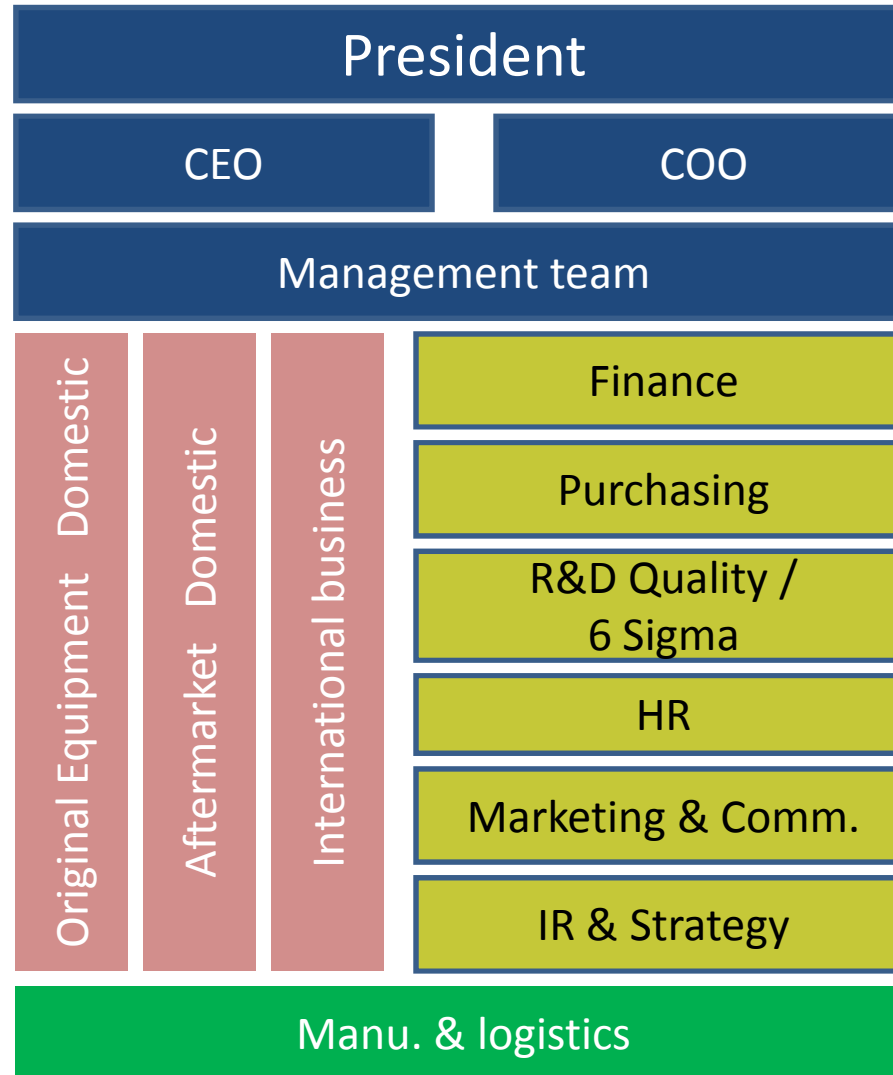
Quality (Certifications & Audit)

- ISO/TS16949 Quality Management System, OHSAS18001 System, and ISO14001 Environmental management System
- Lean, 6Sigma Deployment
- CSR (Corporate Social Responsibility)

6s Business Development Plan

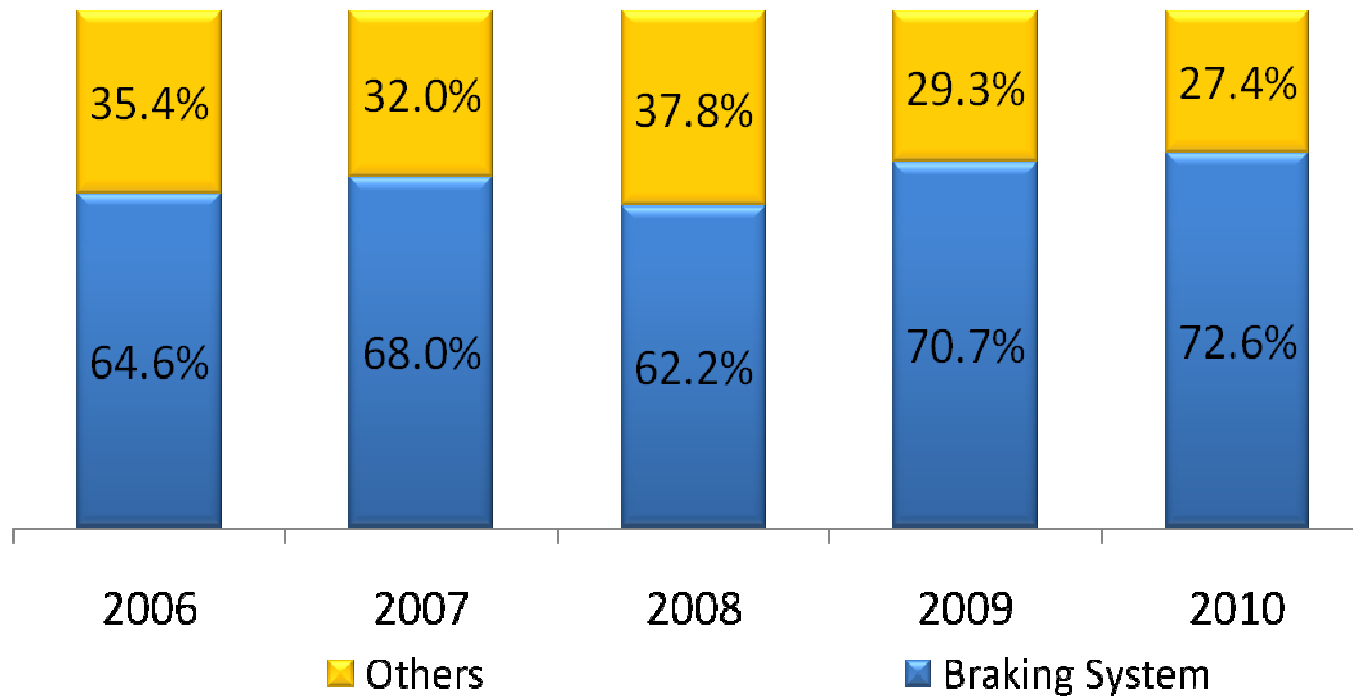


Company Structure



Simple & lean, very powerful

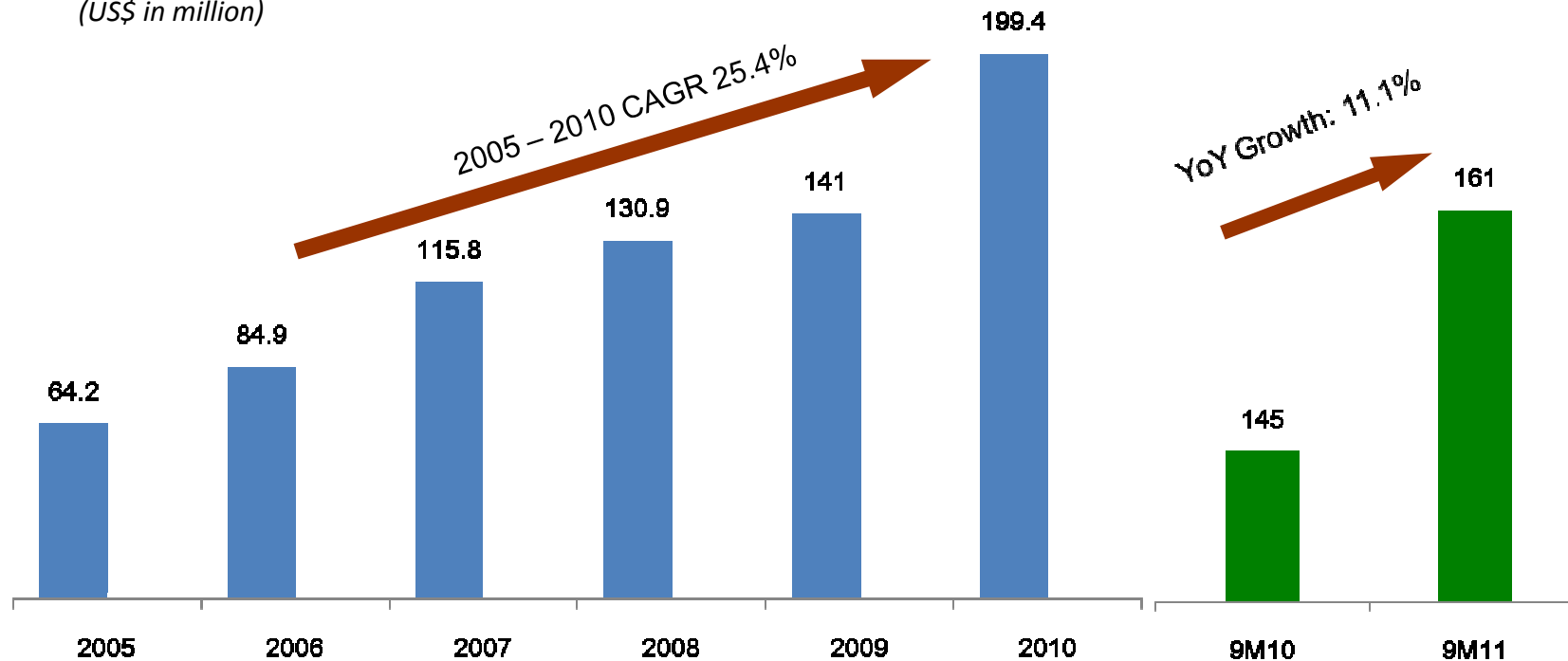
Percentage of Sales



*Note: Braking system includes air braking systems and hydraulic brake
Others include air controlling systems, power steering and automotive electrical products etc.*

Revenue (FY05-FY10)

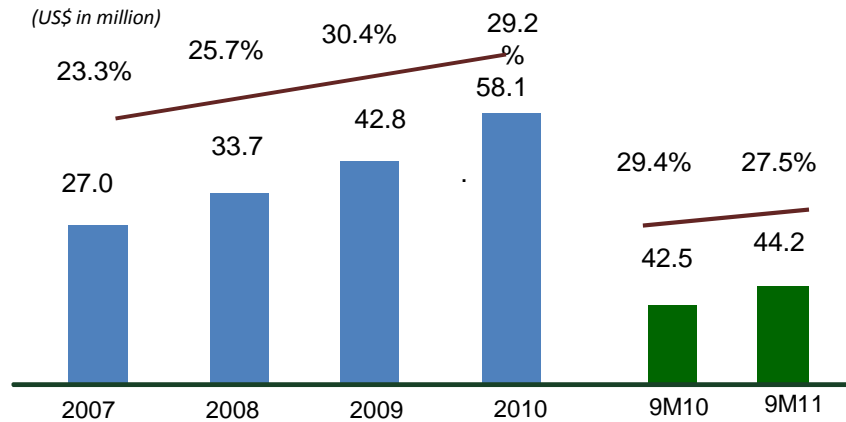
(US\$ in million)



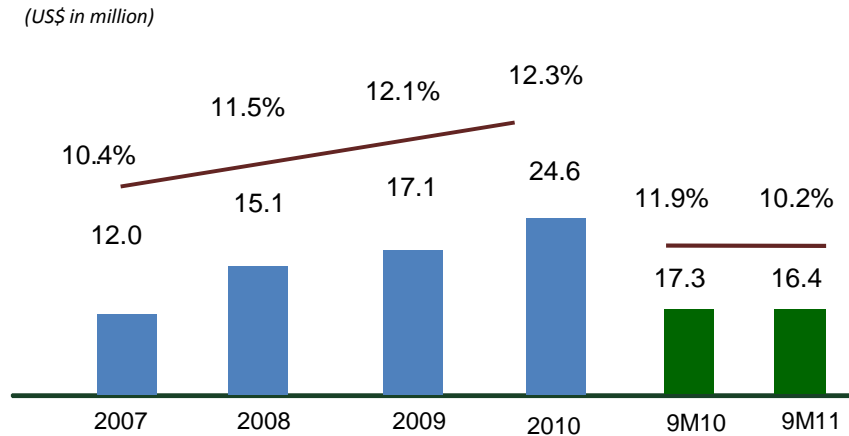
We have a proven track record of historical revenue growth, with a CAGR of 25.4% from 2005 - 2010

Note: (1) SORL's consolidated annual financial statements for 2010 and 2009 include the acquired segments of the Ruili Group's business as if the acquisition had taken place on January 1, 2009.

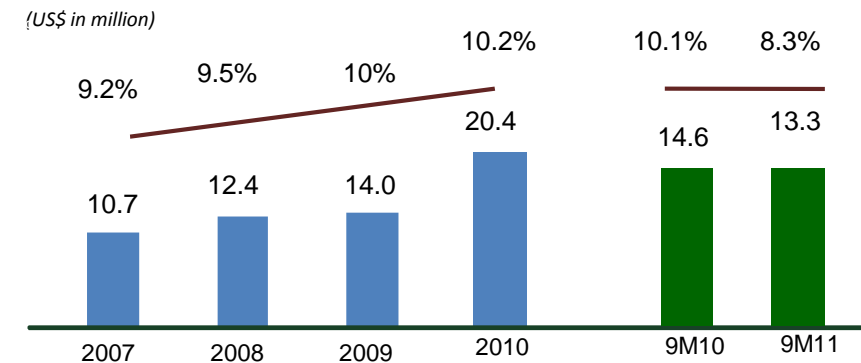
Gross Profit / Margin



Operating Profit / Margin



Net Profit / Margin



Note: (1) SORL's consolidated annual financial statements for 2010 and 2009 include the acquired segments of the Ruili Group's business as if the acquisition had taken place on January 1, 2009.

THANK YOU!



China Contact

Ben Chen
VP Finance &
Corporate Secretary
+86 (577) 6581-7720
+86 13868890009
ben@sorl.com.cn

US Contact

Kevin Theiss
Grayling
+1 (646) 284-9409
kevin.theiss@us.grayling.com

WWW.SORL.CN